

# Installation Instructions

Before starting, please source the following:

- 20m two core flex (not solid core)
- 13no. disconnectors (see picture)
- 100no. 1/2" no.6 screws, cross head

Cut 13 x 0.5m pieces of flex and strip both ends (if any of the clock outlets are not close to the top of the painting cut the cable longer say 0.75m)

Wire one end of each cable into the clock outlet cover. Wire the other end into the 'female' of the disconnector blocks

Wire the 'male' disconnector block onto the 220v cable that is attached to the driver

Take down the paintings

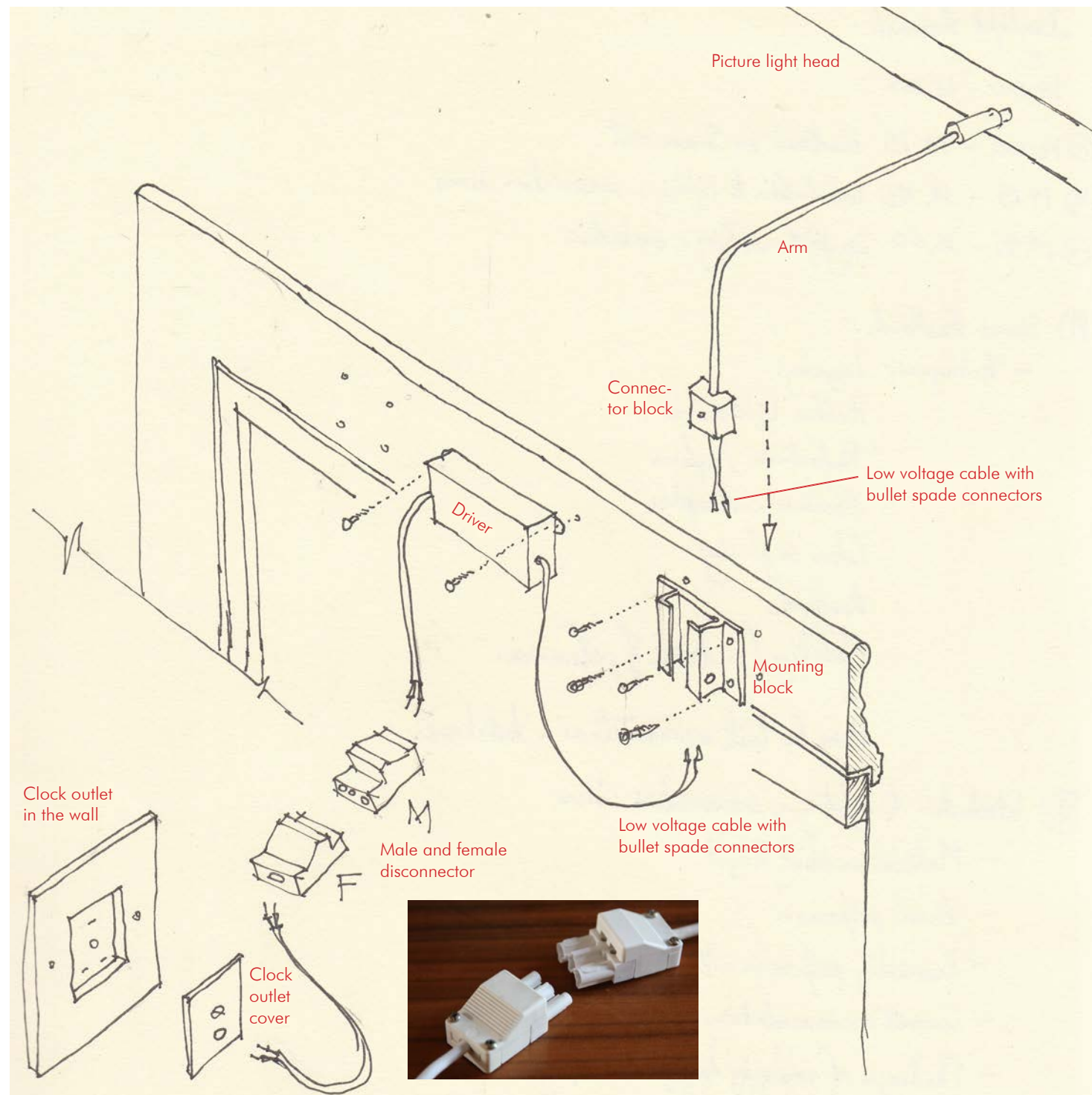
Remove existing picture lights

Mark out positions for the mounting blocks (see spacings on the next page). The smaller paintings have single arm fittings and the wider paintings have two arm fittings.

Remove mounting blocks from the arms. Where the fitting has two arms note which one has a wire emerging from the arm.

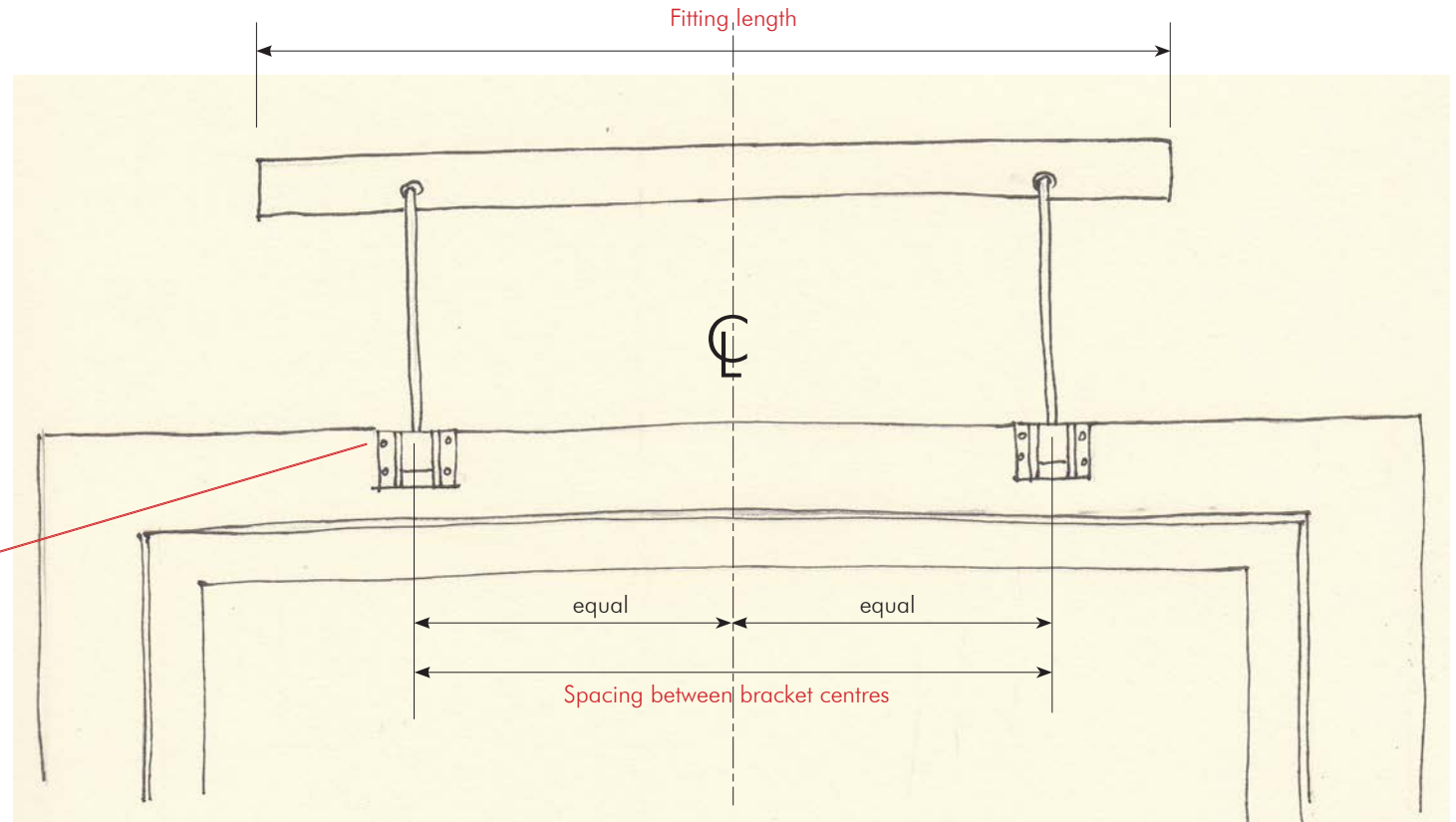
Carefully attach brackets ensuring the screws do not penetrate the front of the frame.

Attach the driver to the frame close to the wired arm, ensure the 220v cable is connected together, the clock out cover installed and re-hang.



# Setting Out

The longer picture lights are supplied with two arms and thus require two mounting brackets to be attached to the frame. The sketch to the right shows how to set these out starting with the centre line of the frame. The brackets are spaced equally from the centre line and their separation can be found in the table below the sketch. Please always use four screws unless there is a problem with the thickness of the frame. The brackets can be attached lower down if necessary.



Mounting brackets aligned to the top of the frame unless there is a bevel or return.

BILLARD ROOM				HALL					
		Fitting length (inches)	No. of brackets	Spacing between bracket centres		Fitting length (inches)	No. of brackets	Spacing between bracket centres	
1	Donaldson	42	2	30	1	Colin Harter	30	2	18
2	Adamson	44	2	32	2	Paterson	18	1	centred
3	Adamson	40	2	28	3	McLaughan-Milne	28	2	16
4	MacPherson 'French River'	20	1	centred	DINING ROOM				
		26	2	14	1	Houston	28	2	16
DRAWING ROOM				2	Oppenheimer	24	1	centred	
1	Hunter	16	1	centred	3	Spence-Smith	16	1	centred
					4	Oppenheimer (Lillies)	28	2	16

# Academy Art Light Technical Notes

Horns Oak Farm  
Meopham  
Kent DA13 0BX  
<http://www.academyartlight.com>

26th October 2015



# The Art Light

Art Light fittings comprise a head, arm(s), mounting bracket, power source and one or more LED light units.

The length of the head, size of arms and configuration of light units is selected to meet the needs of specific paintings. As the fittings can be easily disassembled they can also be configured for alternative paintings of similar size. The head and arms are available in a range of finishes, powder coated as well as satin and polished metal.

## LED Light sources

The LED units clip onto a track in the picture light head. They have following characteristics:

Beam Angle-	43°, 28° or 42x14°
Light output	approx. 100 lumens
Colour temperature	2,700K
Colour rendering	85+
Power consumption	2W (~2.35 circuit watts)
UV output	Zero
Lamplife	L70, 50,000hrs

## Power source

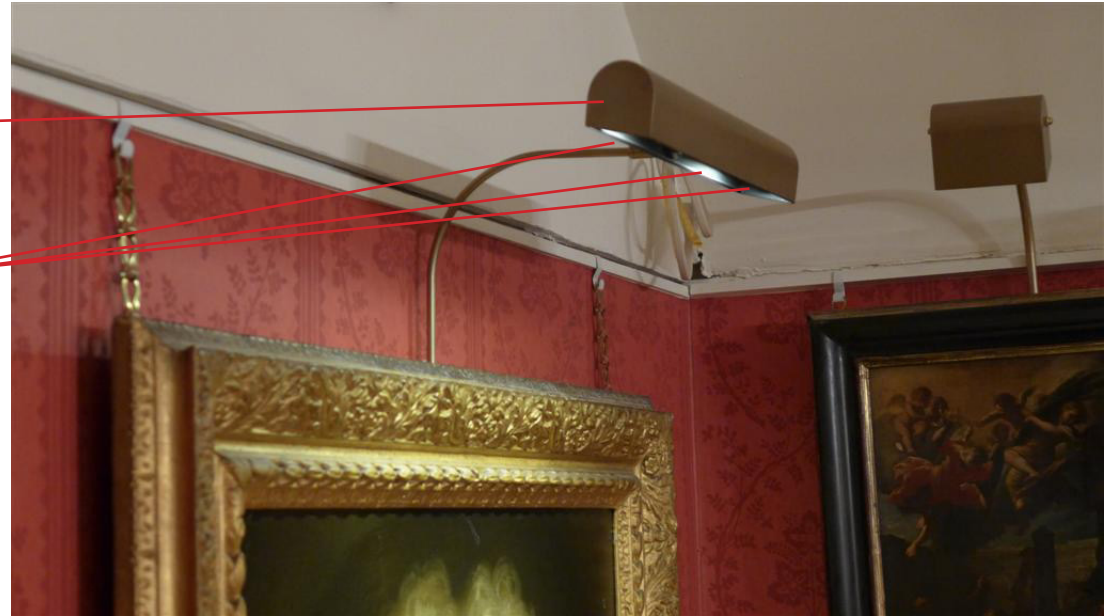
The Art Light is supplied with either a 10W or 25W non-dimmable constant voltage LED driver

## Mounting

The fittings are not supplied with screws. Suggested screw sizes are No.6 1/2", 5/8" and 3/4" depending on the size of the fitting and the frame.

Head

Multiple LED light units mounted on a track inside the head. Each unit can be selected with different beam angles and aimed individually to optimise distribution of light over the picture



Arm

Power source - LED driver

Lead to mains outlet, typically a recessed clockoutlet

Mounting bracket

